



About Tim Haynes Limited

Tim Haynes Limited is a working business. They focus on the rigging of superyachts worldwide. THL was established in 2004, with three bosses, Tim Haynes, Sally Steggell, and Patrick Welton. Over the period of three years, there are now twelve employees. Tim and Sally are my parents and through my passion of making the world a more ecological place to live, I am helping them answer their question ‘as a company how can we be more eco friendly?’





The Problems

- THL have twelve employees, and every week at least one of the company members flies abroad. This means the rate of carbon emissions being submitted is very high.
 - Everyday three of the members use a car to get to work within a distance of five miles.
 - Also over a month this company can print up over a hundred copies of something; this means the carbon dioxide being let out cannot be taken in again, because THL are using the trees as paper.
 - The company buys rags and cleaning equipment constantly without thinking of the carbon dioxide used to produce the products.
 - The company buys the cheapest tea and coffee without realizing the environmental cost.
 - When the administrators leave the office the lights are left on and the computers left on standby, wasting electricity.
- Lastly the company has no insight of how its actions are harming the environment.





My Aim

I hope to make Tim Haynes Limited aware of what they are doing to our planet. Furthermore to give them (and other companies) suggestions on how to make the business greener .





What is this doing?

As I stated earlier, THL use a plane to fly to different parts of the world often, and at least three of them every day travel to work in a car. Both of these things add to the Carbon dioxide layer around the earth, trapping all the sunlight in.

THL use lots of paper everyday; paper is made from trees. However because of THL'S demand for paper, it is forcing paper manufacturers to cut down more trees. This becomes a disadvantage because trees are one way to settle the carbon dioxide emissions, because trees take in carbon dioxide (as a part of their diet, photosynthesis) and let out oxygen.

When THL clean the rigs, the rags used are thrown away and were factory made. Factories use energy from power stations, and most power stations use heavy fossil fuels. Everyday this lets out a lot of CO2 emissions.

In the same way when THL employees leave lights on and other facilities on standby, or turn the heating up too high power stations will have



emitted CO₂ to provide the power that has been wasted.



By supporting sustainable farming communities THL will ensure that deforestation is kept to a minimum, which helps to offset the carbon dioxide we produce.

Cars and vans belonging to the companies can be run on bio fuels instead of fossil fuels which can harm the environment. The plants grown to produce this fuel will turn sunlight into fuel using CO₂ and water as raw materials, this biomass is usually carbon neutral. This means the amount of CO₂ taken in during growth equals the amount emitted on burning.

The result of this will be in later years ICEland may no longer exist, polar bears and other arctic animals will die out because they have no home, and native plants which grow in specific seasons will be no more. These things are all an effect of the change in temperature, due to global warming.






My suggestions

After identifying where Tim Haynes Limited's actions cause CO₂ to be created, I have advised the company to pursue all of the following:

- For every flight plant one tree. Please see my carbon offset schedule.
- Use a bicycle if the distance to get to, is under ten miles.
- Make sure you are using recycled paper, this means that it was treated and what was once cardboard, or a tin is now being reused as paper.
- Turn off the lights when leaving the office.
- Reuse and recycle, you can purchase special bins for recycling. Also reusing means to use something again. Reuse packaging from the rig.
- Try and get the message across to other companies.
- When buying coffee and tea try to ensure that it is produced by a company in which fair trade is involved, and sustainable farming.
- To help reduce carbon dioxide emissions from factories THL recycle and reuse old shirts and use them for cleaning and polishing the rig.



- 
- Recycle the empty tins and containers.
 - Dispose waste products appropriately (recycle).

The outcome ...

 THL now use Evolve recycled paper.



THL have made an agreement with Priestlands Secondary School that they will provide and help plant a number of trees for the school to replace their carbon footprint.



I am delighted to acknowledge that they do recycle and reuse different objects around their office, and drink coffee and tea from sustainable farming.



THL are looking into using bio fuels to run their vans and cars.



Most THL employees cycle when they can.

Lights and computers are switched off before employees leave the offices.

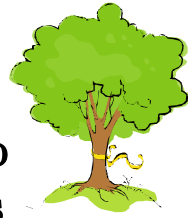


THL use locally sourced products and labour where possible.





Me, well I encouraged the manager to create a website about their procedures on going green so other companies can follow their actions. This page can be visited soon at www.timhaynes.com .



Why?

I carried out this project purely because of my love for the environment and its wildlife. I would like to take part in making the world greener and friendlier for everyone and everything. I believe everyone can help in their own way, big or small.





Carbon Offset Schedule

UK to? Country	NO. of trees to Carbon Offset	CO2 emissions to fly there
Turkey	1 small tree	708kg
France	1 shrub	284kg
Singapore	2 trees	2501kg
New Zealand	3 trees	4222kg
Italy	1 shrub	273kg
Palma	1 shrub	384kg

I have created a carbon offset schedule; the first column is countries visited regularly by Tim Haynes Limited. In the second column I have shown how many trees would have to be planted to



offset the carbon footprint from the flight, considering that one tree is normally worth around £12.00. In my last column it shows the carbon emissions given out from the flight.

